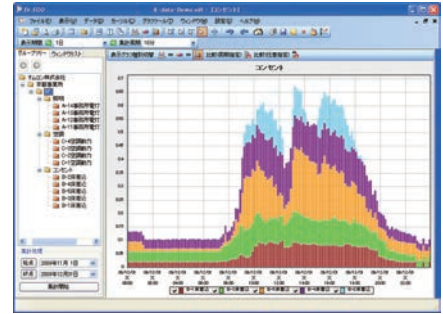


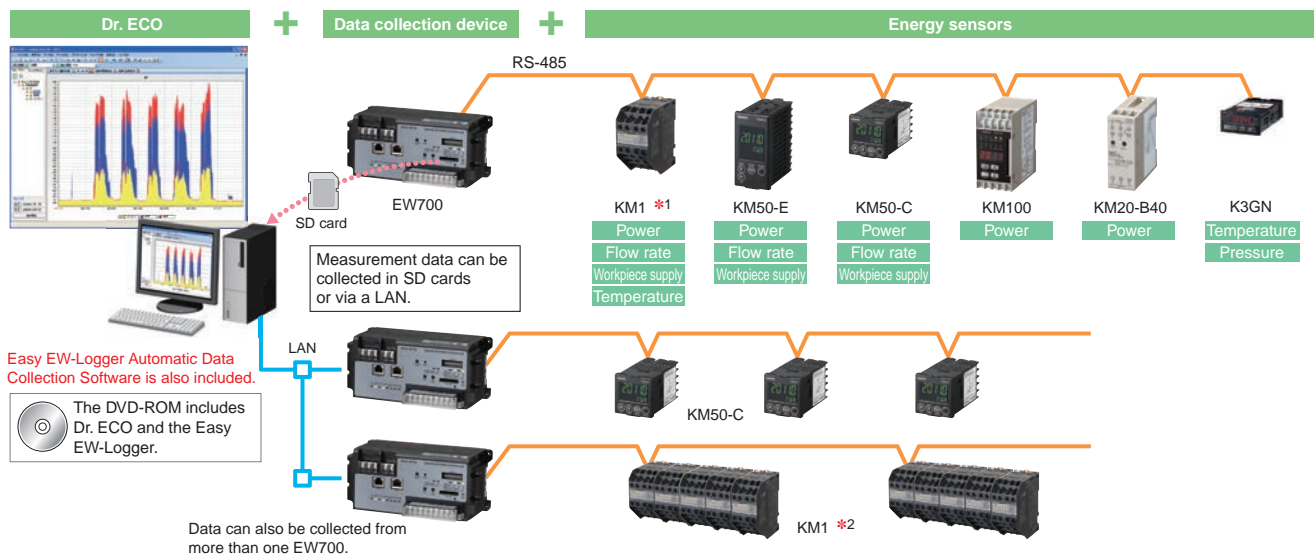
# Energy Savings Analysis Software EWS-DE10

CSM\_EWS-DE10\_DS\_E\_1\_1

Find wasted energy with simple operations.



## System Configuration Example



\*1. You can connect the required Slave Unit to the KM1 to take measurements.

\*2. To use the KM1, download the KM1 update program from your OMRON website and use it.

## Standard Models

Name	Model
Dr. ECO Energy Savings Analysis Software	EWS-DE10

## Recommended System Requirements

Item	Recommendation
OS	Windows XP SP3 or higher Windows Vista SP2 or higher (32-bit edition only) Windows 7 (32-bit edition only) Microsoft .NET Framework 3.5 is required. This makes it impossible to run the software on Windows 2000 or earlier versions of Windows.
Processor	Intel Core 2 DUO, 2.0 GHz or better
Memory	1 GByte min. (2 GBytes recommended)*
Other items	The software is provided on a DVD, so a device to read the DVD is required. A LAN interface is required to automatically collect data. A device to read SD cards is required to use SD cards to collect data.

\* An insufficient memory error may occur if you leave a graph displayed for an extended period of time.

Guideline for graph display period: Approximately 1 month for 2 Gbytes of memory, a measurement interval of 10 minutes, and 80 channels of measurement items.

## Multi-language Support

Item	Function/specification
Language	Select from any of these five languages: Japanese, English, Korean, Chinese, and Taiwanese.

## Functions and Specifications

	Item	Specification
Project	Number of files created	No limit
	Size of one file (sdf file)	4 GB (A file that exceeds 4 GB cannot be saved.)
Importing	Supported formats	EW700 measurement data format M2M mail data format (An e-watching Energy Measurement Service contract is required.) CSV data format (only when one column is selected for importing)
	Measurement periods that can be imported	1 min, 10 min, 30 min, 1 h, or 1 day
Registration capacity of 1 project	Number of measurement items	250 max.
	Number of groups	50 groups max. at the top level Groups can be in a hierarchy with up to 5 levels.
Calculations	Calculation types	Addition, subtraction, multiplication, and division
	Number of elements in a calculation	6 max. (A+B+C+D+E+F)
Graph displays	Graph types	Line, pie, bar (bar + line), and overlapping line graph (There is a maximum of 32 periods for overlapping line graph.) Two-point comparison bar graphs. (Only two data items can be compared.)
	Digital interval	Measurement interval, 10 min, 1 h, 1 day, 1 week, or 1 month

## Terms and Conditions Agreement

### Read and understand this catalog.

Please read and understand this catalog before purchasing the products. Please consult your OMRON representative if you have any questions or comments.

### Warranties.

(a) Exclusive Warranty. Omron's exclusive warranty is that the Products will be free from defects in materials and workmanship for a period of twelve months from the date of sale by Omron (or such other period expressed in writing by Omron). Omron disclaims all other warranties, express or implied.

(b) Limitations. OMRON MAKES NO WARRANTY OR REPRESENTATION, EXPRESS OR IMPLIED, ABOUT NON-INFRINGEMENT, MERCHANTABILITY OR FITNESS FOR A PARTICULAR PURPOSE OF THE PRODUCTS. BUYER ACKNOWLEDGES THAT IT ALONE HAS DETERMINED THAT THE PRODUCTS WILL SUITABLY MEET THE REQUIREMENTS OF THEIR INTENDED USE.

Omron further disclaims all warranties and responsibility of any type for claims or expenses based on infringement by the Products or otherwise of any intellectual property right. (c) Buyer Remedy. Omron's sole obligation hereunder shall be, at Omron's election, to (i) replace (in the form originally shipped with Buyer responsible for labor charges for removal or replacement thereof) the non-complying Product, (ii) repair the non-complying Product, or (iii) repay or credit Buyer an amount equal to the purchase price of the non-complying Product; provided that in no event shall Omron be responsible for warranty, repair, indemnity or any other claims or expenses regarding the Products unless Omron's analysis confirms that the Products were properly handled, stored, installed and maintained and not subject to contamination, abuse, misuse or inappropriate modification. Return of any Products by Buyer must be approved in writing by Omron before shipment. Omron Companies shall not be liable for the suitability or unsuitability or the results from the use of Products in combination with any electrical or electronic components, circuits, system assemblies or any other materials or substances or environments. Any advice, recommendations or information given orally or in writing, are not to be construed as an amendment or addition to the above warranty.

See <http://www.omron.com/global/> or contact your Omron representative for published information.

### Limitation on Liability; Etc.

OMRON COMPANIES SHALL NOT BE LIABLE FOR SPECIAL, INDIRECT, INCIDENTAL, OR CONSEQUENTIAL DAMAGES, LOSS OF PROFITS OR PRODUCTION OR COMMERCIAL LOSS IN ANY WAY CONNECTED WITH THE PRODUCTS, WHETHER SUCH CLAIM IS BASED IN CONTRACT, WARRANTY, NEGLIGENCE OR STRICT LIABILITY.

Further, in no event shall liability of Omron Companies exceed the individual price of the Product on which liability is asserted.

### Suitability of Use.

Omron Companies shall not be responsible for conformity with any standards, codes or regulations which apply to the combination of the Product in the Buyer's application or use of the Product. At Buyer's request, Omron will provide applicable third party certification documents identifying ratings and limitations of use which apply to the Product. This information by itself is not sufficient for a complete determination of the suitability of the Product in combination with the end product, machine, system, or other application or use. Buyer shall be solely responsible for determining appropriateness of the particular Product with respect to Buyer's application, product or system. Buyer shall take application responsibility in all cases.

NEVER USE THE PRODUCT FOR AN APPLICATION INVOLVING SERIOUS RISK TO LIFE OR PROPERTY OR IN LARGE QUANTITIES WITHOUT ENSURING THAT THE SYSTEM AS A WHOLE HAS BEEN DESIGNED TO ADDRESS THE RISKS, AND THAT THE OMRON PRODUCT(S) IS PROPERLY RATED AND INSTALLED FOR THE INTENDED USE WITHIN THE OVERALL EQUIPMENT OR SYSTEM.

### Programmable Products.

Omron Companies shall not be responsible for the user's programming of a programmable Product, or any consequence thereof.

### Performance Data.

Data presented in Omron Company websites, catalogs and other materials is provided as a guide for the user in determining suitability and does not constitute a warranty. It may represent the result of Omron's test conditions, and the user must correlate it to actual application requirements. Actual performance is subject to the Omron's Warranty and Limitations of Liability.

### Change in Specifications.

Product specifications and accessories may be changed at any time based on improvements and other reasons. It is our practice to change part numbers when published ratings or features are changed, or when significant construction changes are made. However, some specifications of the Product may be changed without any notice. When in doubt, special part numbers may be assigned to fix or establish key specifications for your application. Please consult with your Omron's representative at any time to confirm actual specifications of purchased Product.

### Errors and Omissions.

Information presented by Omron Companies has been checked and is believed to be accurate; however, no responsibility is assumed for clerical, typographical or proofreading errors or omissions.