



Programmable Terminal NB-series

Practices Guide for Graphics Library

NB3Q-TW01B
NB5Q-TW01B
NB7W-TW01B
NB10W-TW01B

A large rectangular box with a yellow-to-orange gradient background and a thin orange border. The text "Practices Guide" is centered within this box in a white, sans-serif font.

Practices
Guide

■ Introduction

This guide describes reference information to create NB screens. It does not provide safety information.

Be sure to obtain the manuals for NB-series Programmable Terminals, read and understand the safety points and other information required for use, and test sufficiently before actual use of the equipment.

Terms and Conditions Agreements

Thank you for your usage of products of Omron Corporation (“Omron”). Without any special agreements, these terms and conditions shall apply to all transactions regardless of who sells.

● Definitions of Terms

Omron product(s): Omron’s factory automation system devices, general control devices, sensing devices, and electronic/mechanical components.

- Catalogs: Any and all catalogs (including “Best Components” and other catalogs), specifications, instructions and manuals relating to Omron products, including electronically provided data.
- Conditions: Use conditions, rating, performance, operating environment, handling procedure, precautions and/or prohibited use of Omron products described in the catalogs.
- User application(s): Application of Omron products by a customer, including but not limited to embedding/using Omron products into customer’s components, electronic circuit boards, devices, equipment or systems.
- Conformity: (a) conformity, (b) performance, (c) no infringement of intellectual property of third party, (d) compliance with laws and regulations, and (e) conformity to various standards of Omron products in user applications.

● Note about Descriptions

- Rating and performance is tested separately. Combined conditions are not warranted.
- Reference data is intended to be used just for reference. Omron does NOT guarantee that the Omron Product can work properly in the range of reference data.
- Examples are intended for reference. Omron does not warrant the conformity in usage of the examples.
- Omron may discontinue Omron products or change specifications of them because of improvements or other reasons.

● Note about Use

Adopt and use Omron products considering the following cautions.

- Use the product in conformance to the conditions, including rating and performance.
- Check the conformity and decide whether or not Omron products are able to be adopted. Omron makes no guarantees about the conformity.
- Make sure in advance that electricity is properly supplied to Omron products and they are set up rightly in your system for intended use.
- When you use Omron products, ensure the followings: (i) allowance in aspect of rating and performance, (ii) safety design which can minimize danger of the application when the product does not work properly, (iii) systematic safety measures to notify danger to users, and (iv) periodical maintenance of Omron products and the user application.
- Omron assumes no responsibility for any direct or indirect loss, damage and expense resulting from infection of our products, installed software, any computer devices, computer programs, network, and databases with the followings: DDoS attack (distributed DoS attack); computer virus and other technically harmful program; and unauthorized

access.

Please conduct the followings by yourself: (i) anti-virus software, (ii) data input/output, (iii) lost data recovery, (iv) protections against computer virus that contaminate Omron products or the installed software, and (v) measures to protect Omron products from unauthorized access.

- Omron products are designed and manufactured as commodity for general industrial products. For this reason, the usages (a) to (d) are to be unintended. Omron makes no guarantees on Omron products, if you use Omron products for those purposes. However, special applications that Omron expects or usages with especial agreement are excluded.
 - (a) Applications requiring high-level safety (e.g. nuclear control facilities, combustion facilities, aerospace and aviation facilities, railroad facilities, elevating facilities, amusement facilities, medical facilities, safety devices or other applications which has possibility to influence lives or bodies)
 - (b) Applications requiring high reliability (e.g. gas/water/electricity supply system, 24-hour operating system, applications handling with rights/property, such as payment system)
 - (c) Applications in a harsh condition or environment (e.g. outdoor facilities, facilities with potential of chemical contamination or electromagnetic interference, facilities with vibration or impact, facilities on continual operation for a long period).
 - (d) Applications under conditions or environment which are not described in the catalogs
- Omron products in the catalogs are not intended to be used in automotive applications (including two-wheel vehicles). Please DO NOT use Omron products in automotive applications. Contact our sales personnel for automotive products.

● Warranty

Warranty of Omron products is subject to followings.

- Warranty Period: One year after your purchase.
However, except when there is a separate statement in the catalogs.
- Coverage: Omron will provide one of the services listed below, on the basis of Omron's decision.
 - (a) Free repairing of the malfunctioning Omron products (except electronic/mechanical components) at Omron maintenance service sites.
 - (b) Free replacement of the malfunctioning Omron products with the same number of substitutes.
- Exceptions: This warranty does not cover malfunctions caused by any of the followings.
 - (a) Usage in the manner other than its original purpose
 - (b) Usage out of the conditions
 - (c) Usage out of Note about Use in these conditions
 - (d) Remodeling/repairing by anyone except Omron
 - (e) Software program by anyone except Omron
 - (f) Causes which could not be foreseen by the level of science and technology at the time of shipment of the products.
 - (g) Causes outside Omron or Omron products, including force majeure such as disasters

● Limitation of Liability

The warranty described in this Terms and Conditions Agreements is a whole and sole

liability for Omron products. There are no other warranties, expressed or implied. Omron and its distributors are not liable for any damages arisen from or relating to Omron products.

- Export Control

Customers of Omron products shall comply with all applicable laws and regulations of other relevant countries regarding security export control, in exporting Omron products and/or technical documents or in providing such products and/or documents to a non-resident. Omron products and/or technical documents may not be provided to customers if they violate the laws and regulations.

Table of Contents

| | |
|---|-----------|
| Terms and Conditions Agreements | 5 |
| 1 Related Manuals | 9 |
| 2 Precautions | 10 |
| 3 How to Register Graphics Library | 11 |
| 3-1 Overview..... | 11 |
| 3-2 Creating a New Graphics Library | 11 |
| 3-3 Reusing a Graphics Library in a Different Project | 13 |
| Revision History | 15 |

1 Related Manuals

| No. | Model | Title |
|------|--------------------------|--|
| V106 | NB□Q-TW01B NB□W-TW01B | NB-series Programmable Terminals NB-Designer OPERATION MANUAL |
| V107 | NB□Q-TW01B NB□W-TW01B | NB-series Programmable Terminals SETUP MANUAL |
| V108 | NB□Q-TW01B NB□W-TW01B | NB-series Programmable Terminals HOST CONNECTION MANUAL |
| V109 | NB□Q-TW01B NB□W-TW01B | NB-series Programmable Terminals STARTUP GUIDE |

2 Precautions

- (1) When building an actual system, check the specifications of the component devices of the system, use within the ratings and specified performance, and implement safety measures such as safety circuits to minimize the possibility of an accident.
- (2) For safe use of the system, obtain the manuals of the component devices of the system and check the information in each manual, including safety precautions, precautions for safe use.
- (3) It is customer's responsibility to check all laws, regulations, and standards that the system must comply with.
- (4) No part of this publication may be reproduced, stored in a retrieval system, or transmitted, in any form, or by any means, mechanical, electronic, photocopying, recording, or otherwise, without the prior written permission of OMRON.
- (5) The information in this document is current as of October 2020.
The information contained in this document is subject to change without notice due to improvements.

Special information in this document is classified as follows:



Precautions for Safe Use

Describes precautions on what to do and what not to do to ensure proper operation and performance.



Precautions for Correct Use

Describes precautions on what to do and what not to do to ensure proper operation and performance.



Additional Information

Additional information to read as required.

This information is provided to increase understanding or make operation easier.

Copyrights and trademarks

- Sysmac is a trademark or registered trademark of Omron Corporation in Japan and other countries for Omron factory automation products.
- Screen shots are used with permission from Microsoft Corporation.
- Windows is a trademark or registered trademark of Microsoft Corporation in the USA, Japan and other countries.
- Other company names and product names in this document are the trademarks or registered trademarks of their respective companies.

3 How to Register Graphics Library

3-1 Overview

This guide provides the information about the following features regarding to the Graphics Library.

- 1) How to create a new graphics library
- 2) How to reuse the graphics library in a different project

In addition to the default graphics library that NB Designer provides, users can create their original graphics library.

Users can reuse the created libraries in different projects.

Creating and reusing a common standard library consisting of buttons and lamps saves an extra work to create a new library for a new project.

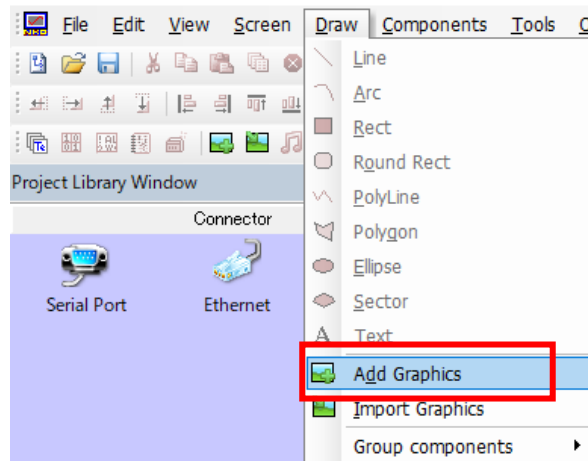
Users can expect to reduce person-hours or to standardize layouts in different projects.

3-2 Creating a New Graphics Library

This section describes how to create a graphics library in a new project.

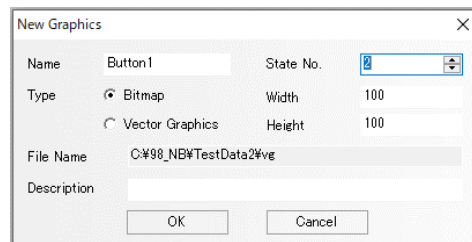
1. Create a new project.
You do not have to add NB or configure communication settings at this point.

2. Select **Draw - Add Graphics**.



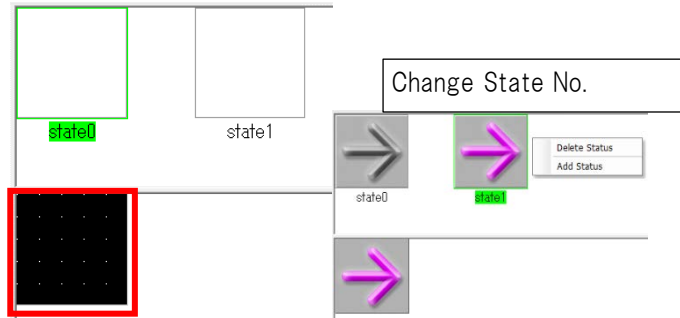
3. Select **Bitmap** for **Type**. Then enter in **Name** and **State No.** boxes. Click **OK**.

Only alphanumeric characters are allowed for **Name**. A compilation error may occur if a project is edited in countries other than the country where the project was originally created.

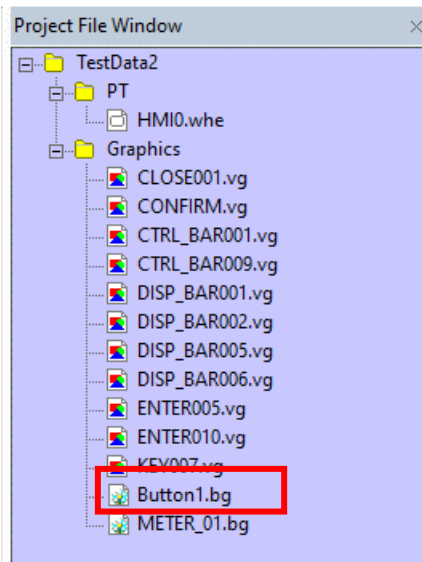


4. Make a right-click inside the red frame and select **Load Graphic** from the menu, or double-click it to display the graphic registration dialog. Select any graphic. Repeat this operation on all *state*.

If you want to change the State No. you have set in Step 3, Select either of **Delete Status** or **Add Status** from the right-click menu.



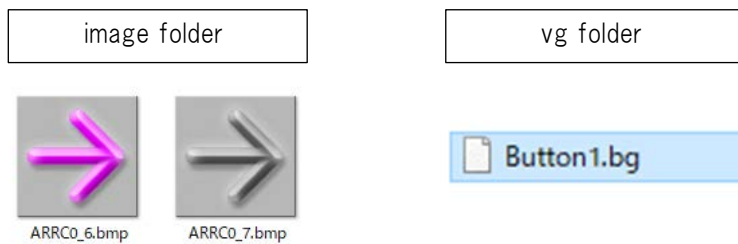
5. The library you have created are added in the Project File Window.



Additional Information

Image file(s) and a bg file are added to the *image* folder and *vg* folder in the project data folder respectively when a graphic is registered.

The files are used for library registration to other folder. It is described in the following section.



Additional Information

Graphic data may be copyrighted. When using bitmap data or other data provided in a website or other software, read the licensing terms and use the data on your own responsibility.

3-3 Reusing a Graphics Library in a Different Project

This section describes how to reuse the graphics library you have created in the previous section for other project.

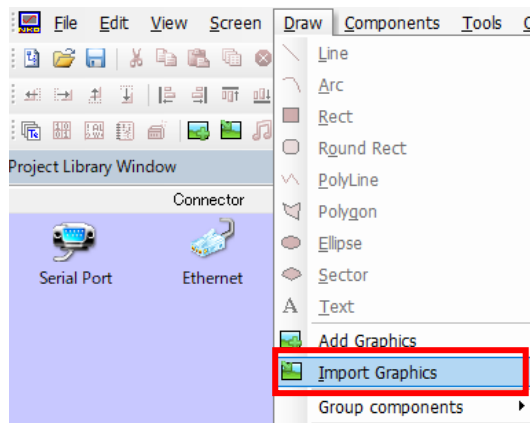
1. Copy the two folders, *image* and *vg*, in the project data file, for which you have created the new library.

| Name | Date modified |
|----------------------------|--------------------|
| image | 10/8/2020 10:35 AM |
| tar | 10/8/2020 10:30 AM |
| temp | 10/8/2020 10:42 AM |
| vg | 10/8/2020 10:30 AM |
| PLCGEDefaultProperties.xml | 10/8/2020 10:42 AM |
| TestData2.bak | 10/8/2020 10:42 AM |
| TestData2.nbp | 10/8/2020 10:42 AM |

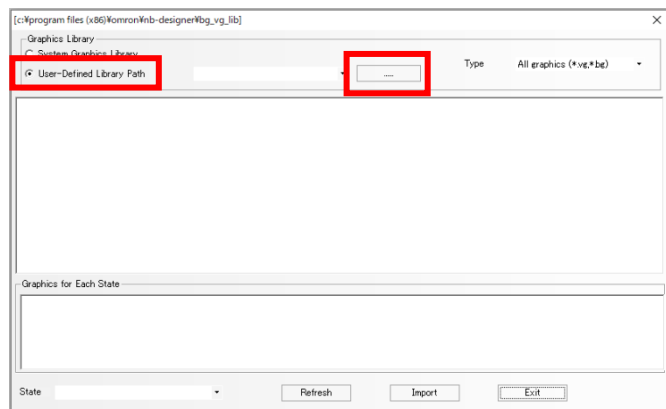
2. Paste the copied folders to any location.
Note that the two folders must be placed in the same path.

| Name | Date modified |
|-------|--------------------|
| image | 10/8/2020 10:44 AM |
| vg | 10/8/2020 10:44 AM |

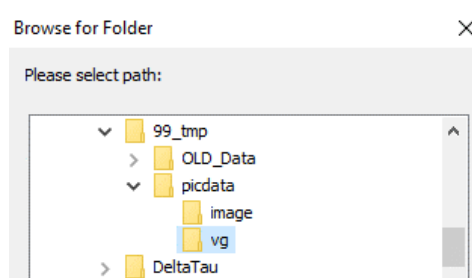
3. Open a project in which you want to reuse the library. Select **Draw - Import Graphics**.



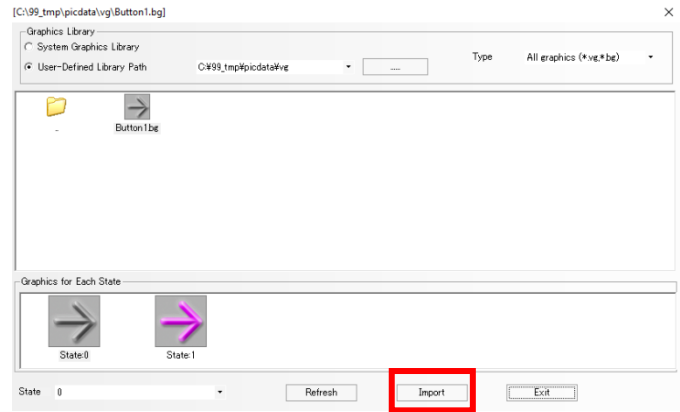
4. Select **User-Defined Library Path** (in the left red frame). Then click the [...] button in the right red frame.



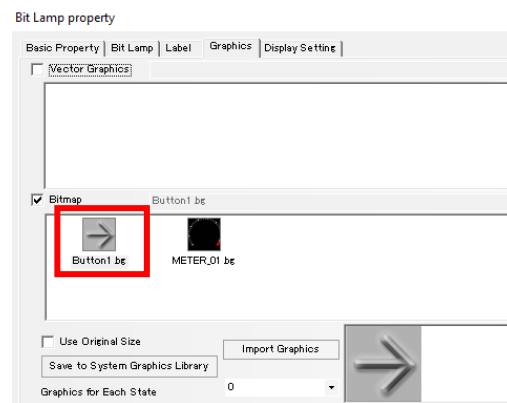
5. Select *vg* folder that you have pasted in Step 2.



6. The library you have created in other project is displayed. Select a library you want to use in a screen. Then click **Import**.



7. Open a component (e.g. lamp, button) using the graphic library to confirm the registered graphic works.



Additional Information

You can rename the *vg* folder that you have pasted in Step 2. Only alphanumeric characters are allowed for a folder name. The *image* folder must not be renamed because graphics will not be referenced correctly.

| Name | Date modified |
|------------|--------------------|
| image | 10/8/2020 10:44 AM |
| NewLibrary | 10/8/2020 10:44 AM |

Revision History

| Revision | Code | Date | Revision Description and Page |
|----------|------|--------------|-------------------------------|
| | 01 | October 2020 | First edition |

OMRON Corporation Industrial Automation Company
Kyoto, JAPAN

Contact: www.ia.omron.com

Regional Headquarters

OMRON EUROPE B.V.

Wegalaan 67-69, 2132 JD Hoofddorp
The Netherlands
Tel: (31)2356-81-300/Fax: (31)2356-81-388

OMRON ELECTRONICS LLC

2895 Greenspoint Parkway, Suite 200
Hoffman Estates, IL 60169 U.S.A.
Tel: (1) 847-843-7900/Fax: (1) 847-843-7787

OMRON ASIA PACIFIC PTE. LTD.

No. 438A Alexandra Road # 05-05/08 (Lobby 2),
Alexandra Technopark,
Singapore 119967
Tel: (65) 6835-3011/Fax: (65) 6835-2711

OMRON (CHINA) CO., LTD.

Room 2211, Bank of China Tower,
200 Yin Cheng Zhong Road,
PuDong New Area, Shanghai, 200120, China
Tel: (86) 21-5037-2222/Fax: (86) 21-5037-2200

Authorized Distributor:

© OMRON Corporation 2020 All Rights Reserved.
In the interest of product improvement,
specifications are subject to change without notice.

Cat. No. V466-E1-01

1020(1020)