

NS-Runtime

Achieve machine/line monitoring and data logging on your office computer.

Machine Viewer

Machine monitoring in an office environment.

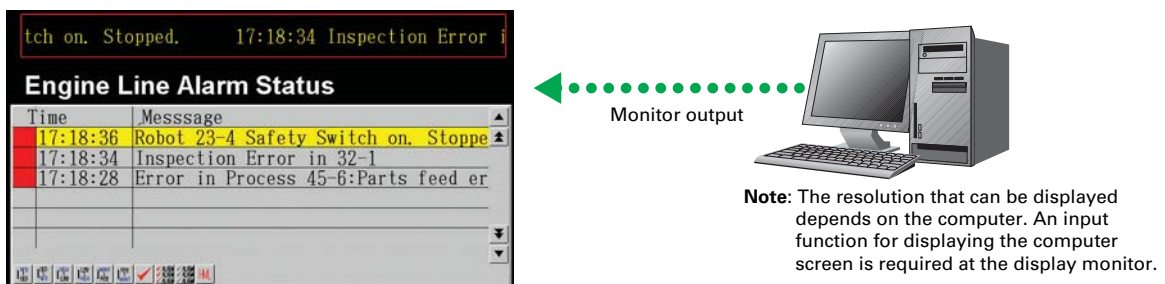
There is no need to create complex host applications. Moreover, when an alarm occurs, a PDF file can be displayed as maintenance information. NS Series screens can be reused on the computer, and screens can be also newly created independently of touch panels at the production site.



Wide Screen

Computer output can be displayed on another wide-screen monitor.

XGA (1,024 x 768 dots) and up to a maximum screen size of 3,840 x 2,400 is supported. Alarms occurring in devices or the line can be monitored.



Data Logger

Log large amounts of data using a personal computer.

Data can be logged through background processing, with up to 160,000 points stored in one file. The logged data is stored in CSV format, and data can be displayed on data log graphs.

Example: 160,000 Points

Data can be logged for approximately 7.4 days, assuming data is logged every two seconds for 12 hours a day. By using automatic file saving, data logging can be continued even longer than 7.4 days.

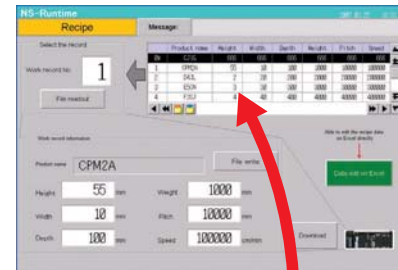


Recipe Handling

Checking machine data or switching processes from a host computer is easy.

Parameter groups in the PLC can be transferred together to a computer, and the transferred data can be checked and edited in CSV format, e.g., using Excel. The edited data can then be transferred together back to the PLC.

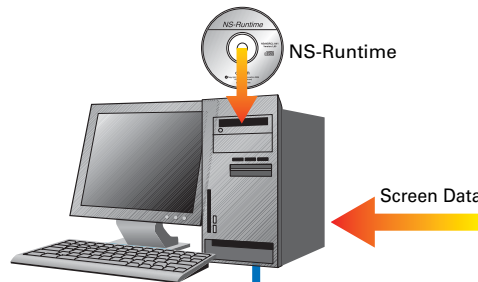
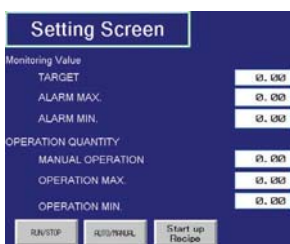
	A	B	C	D	E
1	001	C-J1 G	666	666	666
2	002	CPM2A	55	18	100
3	003	D4 JL	2	20	200
4	004	E5CN	3	30	300
5	005	F3SJ	4	40	400



Easy Installation

After installing the NS-Runtime, just place the screen data in a specified folder and start, that's it.

To get started, just install the NS-Runtime in the computer and place the screen data in the applicable folder. NS/NSJ-series screens and NS-Runtime screens can all be managed using one single tool.



Screen designer: CX-Designer (CX-One)

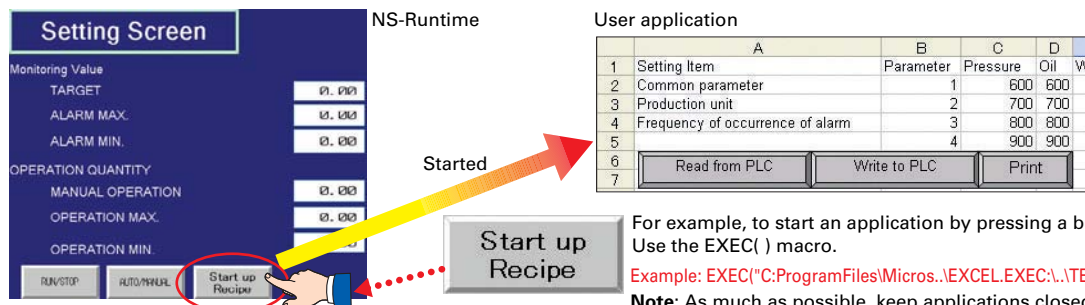
To PLC

Note: The NS-Runtime will operate in a computer environment even if the CX-Designer installed is not installed. The hardware key (USB dongle) that is supplied with the NS-Runtime is required for operation.

Application Startup Function

User applications can be started from NS-Runtime.

Applications can be started simply by pressing buttons on the screen.



For example, to start an application by pressing a button... Use the EXEC() macro.

Example: EXEC("C:\ProgramFiles\Micros.\EXCEL\EXEC\..\TEST2.xls...");

Note: As much as possible, keep applications closed that are not required for operation.

- Do not use this product for 24-hour operation in an FA environment.
- OMRON shall not be responsible if the computer or application does not operate properly due to problems such as noise.
- OMRON shall not be responsible for any problems that may be caused by any applications other than OMRON products.